

## Unlock the power of IoT with out-of-the-box communication solutions

Realising the 4th Industrial Revolution for all businesses; whatever their size. Our products work straight out of the box to connect your serial, digital, wireless & relay devices to a network.

### Prototyping



As a maker board, Raspberry Pi is invaluable; its low cost and rich availability of open source software make it the perfect choice for prototyping.

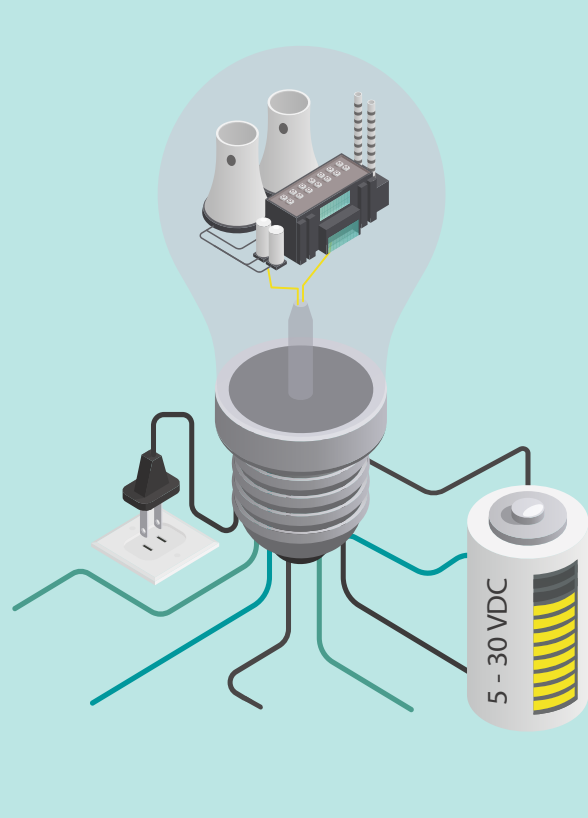
What if you could prototype on a Pi; and deploy seamlessly to industry?

Now with Brainboxes BB-400 Neuron Edge Controller you can. Hardware that meets the needs of industry combined with all the benefits of RPi to create an edge processor that can take your system from inception to the factory floor.



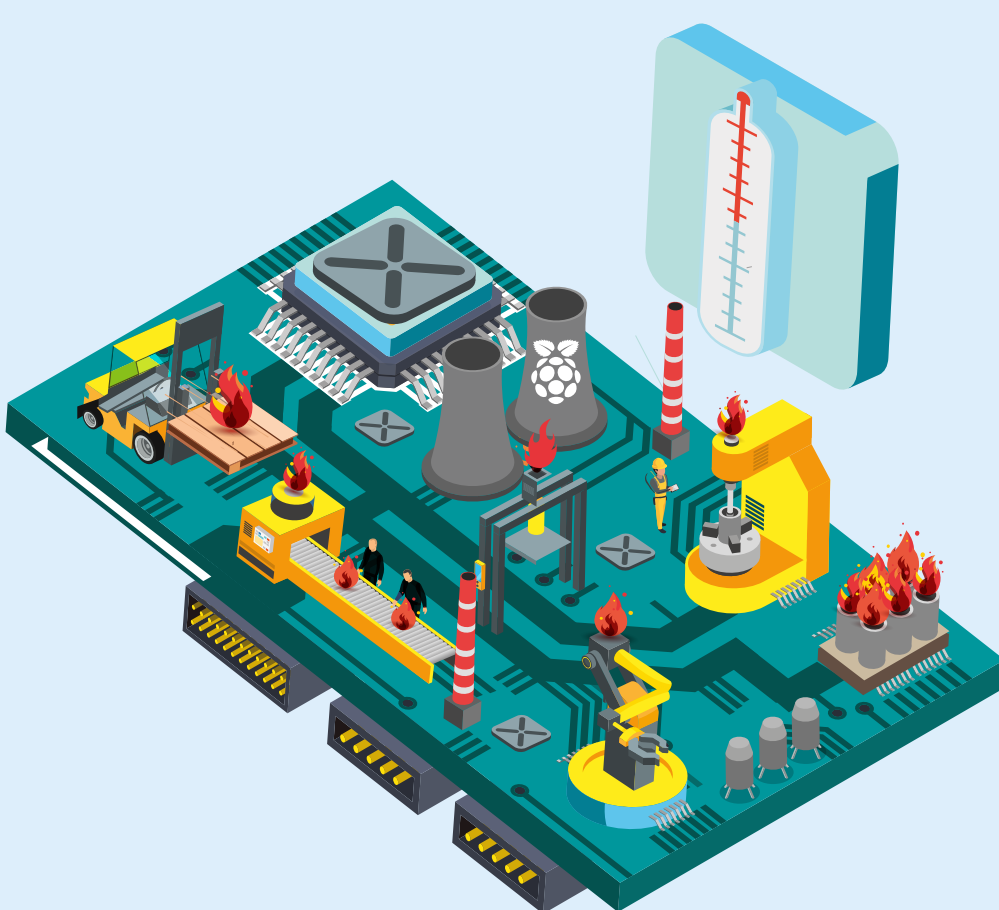
### REAL TIME I/O

RPi is capable of handling edge processing but as an operating system its multi-tasking isn't dedicated to real-time I/O. In an industrial setting you need instant responses. With a dedicated Arduino onboard, the BB-400 monitors & controls I/O lines in real time.



### POWER SUPPLY

RPi requires 5.1V, industrial environments run on 12 or 24 VDC. The BB-400's power management system supplies the right voltage to RPi. 5-30VDC Dual Redundant Power input and Uninterruptible Power Supply make it a perfect fit for the factory floor.



### HEAT DISSIPATION

Industrial products need to work at high temperatures. When RPi gets hot it reduces its core frequency to keep the CPU temperature below the threshold, reducing processing power and risking complete shutdown. A custom heatsink over the RPi brings the BB-400 up to spec: tests indicate no throttling even at 100% CPU usage.

Our RANGE OF ETHERNET TO DIGITAL I/O MODULES and SWITCHES give you simple, reliable communication and control of your equipment.